



RAF NAR

www.rafnar.com

2022 2023



CONTENTS

p. 03	OUR FOUNDER
p. 04	THE ÖK HULL
p. 07	INNOVATION AND QUALITY
	PROFESSIONAL
p. 11	RAFNAR 850
p. 13	RAFNAR 1100
p. 15	RAFNAR 1500
	TACTICAL
p. 17	RAFNAR 850
p. 19	RAFNAR 1100/1200
	LEISURE
p. 21	RAFNAR 850
p. 23	RAFNAR 1100/1200
p. 25	SPECIAL BUILDS

OUR FOUNDER

Össur Kristinsson, the inventor of the ÖK Hull and founder of Rafnar

ÖSSUR KRISTINSSON



Össur Kristinsson is one of Iceland's most prolific inventors and entrepreneurs and the designer of the ÖK Hull. He has had a passion for boats dating back to when he built himself a canoe at young age.

Össur has been successful in various industries and sectors, including establishing companies in the prosthetics and submersible markets. His first company Össur hf. currently employs over 4000 people.

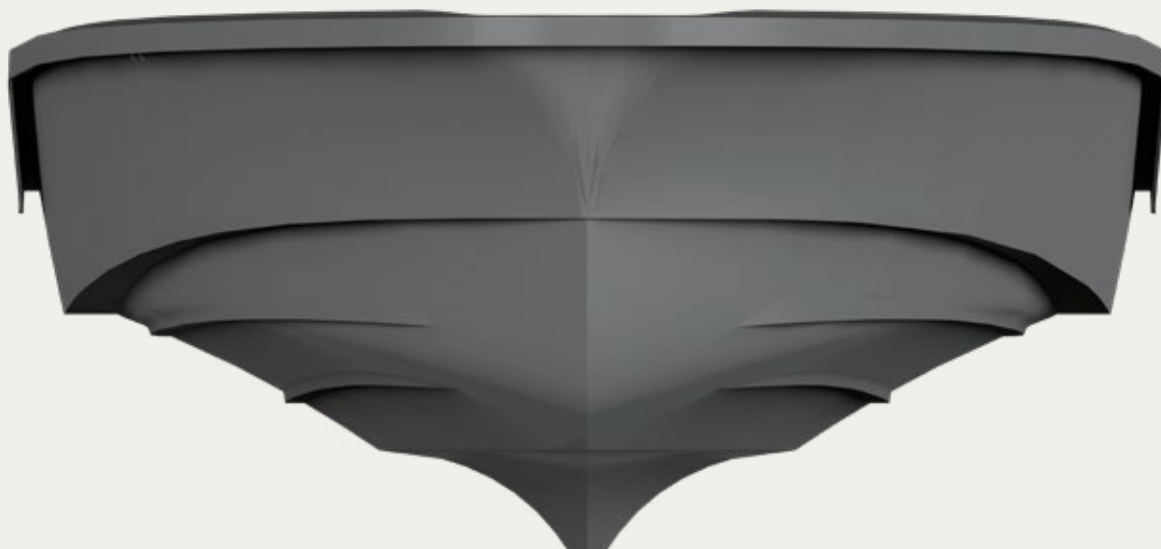
While living in Stockholm, Sweden some 50 years ago, Össur was inspired by the work of engineer Fredrik Ljungström to create a new hull concept based on Lungstrom's arc-of-circle radius.

What was needed:

15 years of research

\$50 million in R&D

A lifetime of experience



THE ÖK HULL



MINIMAL WAKE



EXTREME AGILITY



NO PLANING THRESHOLD



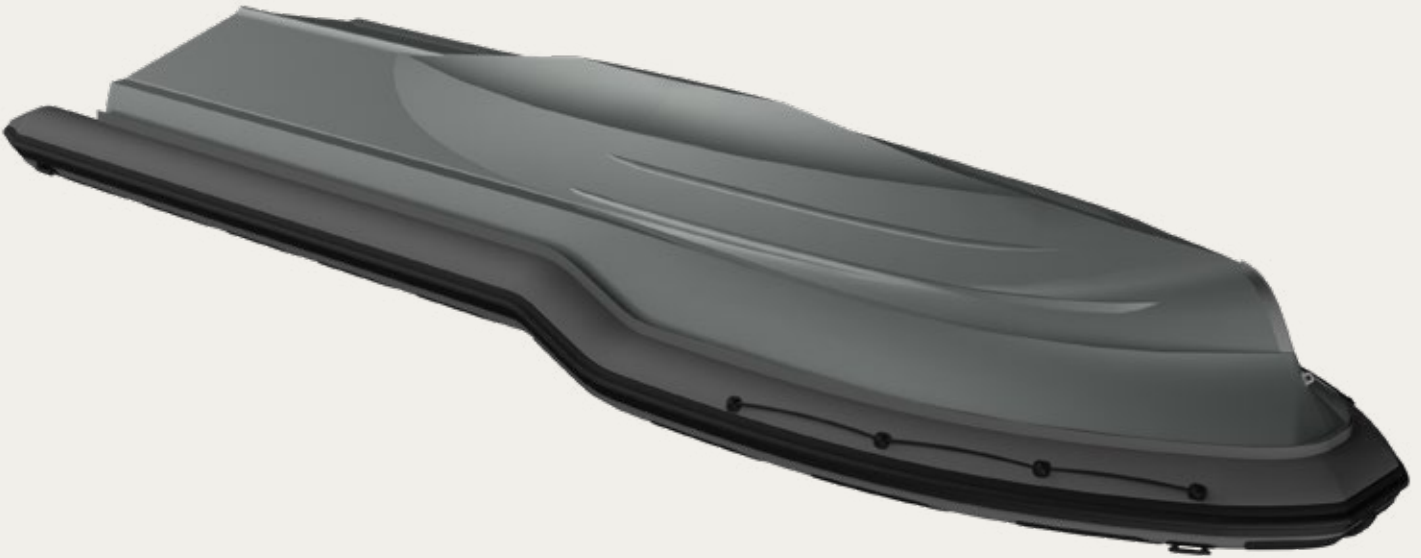
DRAMATIC REDUCTION IN SLAMMING



SUPERB LOAD CARRYING CAPACITY



INCREDIBLE SEAKEEPING PERFORMANCE



The ÖK Hull's inherent abilities help maintain constant speed in rough conditions and result in significantly reduced travel time. Without frequently having to adjust course due to bad weather along with its agility and incredible speed of turn radius, the ÖK Hull offers unrivaled performance in all conditions. Professional operators know the impact of sliding or hooking in high speed turns or the loss of vision when accelerating to the plane. With the ÖK Hull these problems are minimized and the crew can focus on the task at hand.

Boats and equipment are replaceable but not people. Keeping passengers and crew safe is what the Rafnar vessels are designed to do. The revolutionary ÖK Hull with its dramatic decrease in slamming impact directly improves wellbeing and safety on board. Minimized risk of injury or seasickness and the ability to return operation-ready and safely to shore in severe weather conditions are the primary reasons why professionals and leisure owners alike choose Rafnar, and what truly sets us apart from the competition.

Less Slamming

Smooth and comfortable ride due to limited wave slamming.

Reduced Sliding

Precision, high-speed performance, resulting in immediate handling response with no sliding or hooking.

Stability & Payload

High stability and balance when idle or full throttle and high payload capacity without compromising speed.

Extended Life Span

Reduced mechanical & equipment wear from minimal wave slamming, resulting in lower maintenance, replacement rates, and other operating expenses.



RAFNAR

Flóki Vilgerðarson was the first Viking to deliberately sail to Iceland. Flóki took three ravens with him on his journey in the hope that they might help him find land. This earned him the nickname Raven-Flóki (Hrafna-Flóki).

While the first two ravens were unsuccessful, the third took to the skies and headed northwest. When it did not return, Flóki decided to follow it in the hope that it had found land. The third raven led Flóki to Iceland, where he settled in the Westfjords. There, Flóki found a large fjord full of drift ice and decided therefore to name the land Iceland.

Rafnar's logo depicts the flight of the third raven.

INNOVATION AND QUALITY

RAFNR MARITIME USES CUTTING EDGE MANUFACTURING PROCESSES AND ONLY THE HIGHEST QUALITY MARINE GRADE MATERIALS.

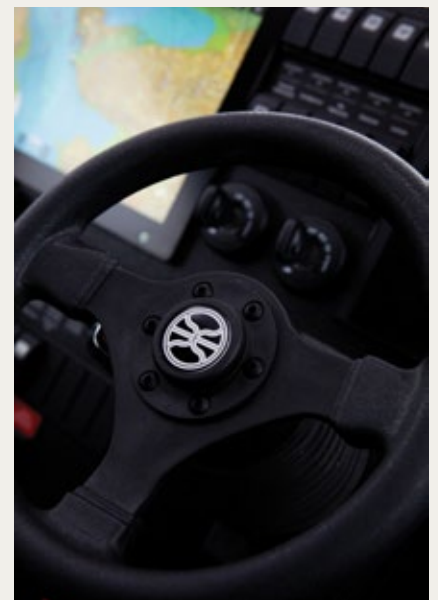
A RAFNR 1100 BEING PULLED FROM THE MOLD





Innovation is at the core of our business. Every day, every hour, every second we stay on our toes always leaning forward and evolving. Our biggest innovation to date, the revolutionary ÖK Hull, has disrupted the worldwide maritime industry. Capable of up to 95% fewer slamming impacts than competing Deep-V Hulls, the ÖK Hull ensures an otherwise unattainable seakeeping standard for vessels in the most extreme marine environments.

There is a reason why Rafnar is quickly becoming the obvious choice for seasoned seafarers. Originally designed to meet the demands of Iceland's long, dark, and unpredictable winters, every aspect of Rafnar vessels is designed for all marine conditions. Used by Coast Guards, Search and Rescue, and Special Forces around the world, our pedigree of toughness is hard to match.



PROFESSIONAL

With our history of Rafnar search-and-rescue, coast-guard, and naval vessels, the Rafnar Professional is the perfect boat for professional seafarers and marine personnel. Working closely with our crews, every aspect is designed with those on board in mind.



TACTICAL

Military operators around the world have found in Rafnar the tactical advantage they've always been seeking. Horsepower alone means nothing without a strong foundation and keeping the crew mission-ready means everything.



LEISURE

Embracing all inherent features of the established Rafnar Professional and Tactical vessels, the Rafnar Leisure is the ideal boat for the leisure and recreation market. Enjoy your day out at sea, without returning to shore battered and bruised.





PROFESSIONAL

p.11-16



TACTICAL

p.17-20



LEISURE

p.21-26

RAFNAR 850

PROFESSIONAL



RAFNAR

TECHNICAL INFORMATION

8.50 m

Length overall

3.00 m

Beam

0.55 m

Draft of hull

BASE MODEL*

Empty craft mass

3200 kg

Fuel capacity

300 L

Power

330 hp

Drive Train

Jet / Stern drive

Construction

GRP

Speed

30 knots

Design category

Lloyd's Register S.S.C.

*Engine setup and fuel capacity can be modified

RAFNAR 850

PROFESSIONAL

The Rafnar 850 Professional is an 8,5-meter RIB that is purpose designed for special services, harbour and coastal protection applications. This formidable craft exhibits the proven performance and widely acclaimed revolutionary seakeeping features of all hulls in the Rafnar range, as well as being easily transportable and deployable from land, sea, or air. Adhering to the precise and patented scaling-adaptation of the 'ÖK Hull & Keel Technology', the Rafnar 850 Professional is ideally suited to all tasks at hand involving tough duty and adaptability – providing exceptional manoeuvrability, safety and comfort, and phenomenal seakeeping in even the most uncomfortable of seas.

At a compact 8,5 meters, this Rafnar craft can be conveniently stowed on deck, in the lazarette or hold of a mother ship or aircraft, and is easily craned or launched. With a deck-layout designed to suit multi-purpose requirements, the Rafnar 850 Professional is delivered with one of two propulsion options: Jet-drive, or Stern-drive. This fast, nimble, and, stable service craft exhibits all of the ingredients needed for a successful task.



RAFNAR 1100/1200

PROFESSIONAL



RAFNAR

TECHNICAL INFORMATION

11.15 m

Length overall

3.20 m

Beam

0.55 m

Draft of hull

BASE MODEL*

Empty craft mass

3800 kg

Fuel capacity

600 L

Power

600 hp

Engines

Outboard

Construction

GRP

Speed

40 knots

Design category

Lloyd's Register S.S.C.

*Engine setup and fuel capacity can be modified

RAFNAR 1100/1200

PROFESSIONAL

The Rafnar 1100/1200 Professional is a rugged 11-meter RIB designed for and by the most demanding crews out there. Robust and built to the highest standards, it is perfect for the professional, commercial, and civil-protection market. A formidable craft that has been tested and developed in close cooperation and partnership with Coast Guards, Search and Rescue teams, and professional teams in extensive real-world conditions in some of the roughest oceans. This vessel exhibits the proven reliability and performance and widely acclaimed revolutionary seakeeping features of all hulls in the Rafnar range.

The Rafnar 1100 Professional is ideally suited for harbour service, coastal protection, and longer duration deep-water missions in dynamic and challenging conditions and is designed to be adaptable to a wide range of service and protection duties. With two powerful outboard engines driving this exceptionally stable craft at speeds in excess of 40 knots, the Rafnar 1100 Professional is a 'get there fast to do the job in safety and comfort' vessel - as attested by many professional, military, and police operators the world over.



RAFNAR 1500

PROFESSIONAL



RAFNAR

TECHNICAL INFORMATION

14.90 m

Length of hull

4.90 m

Beam

0.90 m

Draft of hull

BASE MODEL*

Empty craft mass

18.1 T

Fuel capacity

2250 L

Power

2x 588 KW

Construction

GRP

Fresh water capacity

300 L

Speed

32 knots

Design category

Lloyd's Register S.S.C.

*Engine setup and fuel capacity can be modified

RAFNR 1500

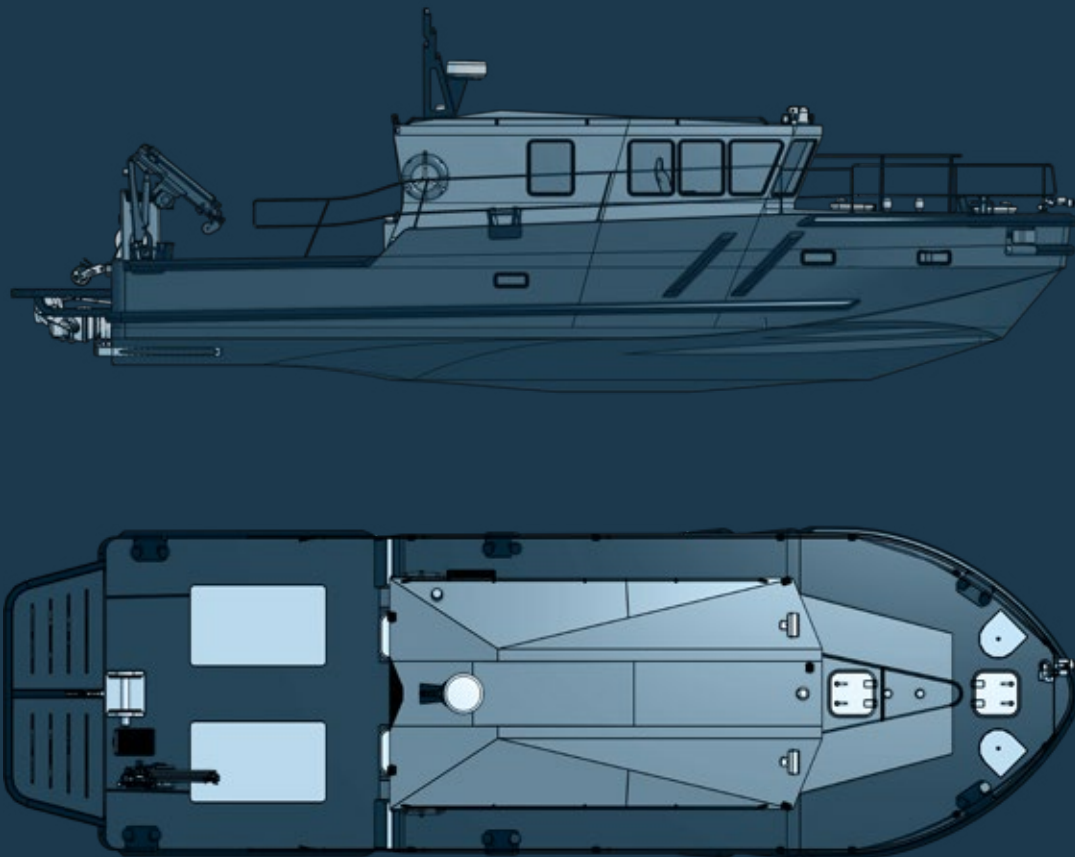
PROFESSIONAL

The Rafnar 1500 Professional utilizes every aspect of the ÖK Hull. At 15 meters and building upon our almost two decades of experience, everything is designed with crews and usability in mind. A top speed in excess of 30 knots, with 2 x 588 kW (788.5 hp) main engines. Powering selection options allow a broad and economic working-speed range, with low average fuel consumption in the lower speed spectrum (8-16 knots), and economical consumption at the higher end of the speed spectrum (16-28 knots).

A broad arc view / perspective from the large bridge-house windows on the spacious bridge, with the option of a transparent roof (deck-head) structure to increase the captain's view at a ship's side during maneuvers and helicopter operations.

An aft working-deck designed for towing, sea-rescue, fire-fighting, or diving operations. The vessel is also suitable for boarding operations with smaller vessels or landing at low docks. Our clients may also add a mechanical side-lift or a transom-mounted stern-lift mechanism for rescue maneuvers or the landing of medical supplies and heavy equipment. Direct access from the aft working-deck to the workshop/storage compartment for repair tasks and equipment storage for diving or rescue operations.

Various customized interior-design options are possible based upon the needs of operational functionality, allotting appropriate space for options of larger or smaller workshop/storage areas, up to five double cabins, and a large crew/passenger lounge area.



RAFNAR 850

TACTICAL



RAFNAR

TECHNICAL INFORMATION

8.50 m

Length overall

3.00 m

Beam

0.55 m

Draft of hull

BASE MODEL*

Empty craft mass

3200 kg

Fuel capacity

300 L

Power

330 hp

Drive Train

Jet / Stern drive

Construction

GRP

Speed

30 knots

Design category

Lloyd's Register S.S.C.

*Engine setup and fuel capacity can be modified

RAFNAR 850

TACTICAL

The Rafnar 850 Tactical is an 8.5 meter RIB that is perfect for Military applications. A true and proven tactical advantage that is robust yet nimble. Exhibiting the proven performance and widely acclaimed revolutionary seakeeping features of all hulls in the Rafnar range, the Rafnar 850 Tactical is an easily deployable and transportable craft. Adhering to the precise and patented scaling-adaptation of the ÖK Hull & Keel Technology.

The Rafnar Tactical is built to handle any environment, mission and possible situation, giving operators the confidence they need to feel secure, agile, and in control. With build quality adhering to the world's highest maritime standards —such as Lloyds and SOLAS— it is also self-righting and available with optional ballistic protection.

The ÖK Hull, with its exceptional seakeeping, dynamic stability and lack of slamming, provides superior visibility at all speeds —perfect when boarding vessels— minimizes wake, and has an immense load-carrying capacity. Every aspect of the boat is designed to be durable and robust. It can take heavy damage and still stay afloat, and in case of an engine failure, it can still climb over its plane threshold.



RAFNAR 1100/1200

TACTICAL



RAFNAR

TECHNICAL INFORMATION

11.15 m

Length overall

3.20 m

Beam

0.55 m

Draft of hull

BASE MODEL*

Empty craft mass

3800 kg

Fuel capacity

600 L

Power

600 hp

Engines

Outboard

Construction

GRP

Speed

40 knots

Design category

Lloyd's Register S.S.C.

*Engine setup and fuel capacity can be modified

RAFNAR 1100/1200

TACTICAL

The Rafnar 1100 Tactical is an 11-meter RIB that is ideal for military applications in tactical scenarios and in all weather. Used by some of the most demanding crews and operators in the world, and when it comes to mission-critical situations, our crews want to be on their Rafnar. Already considered the tip of the spear of the Greek Navy, and with increased use internationally, our Rafnar 1100 is quickly becoming a choice for those looking for a tactical advantage. This vessel exhibits the proven reliability and performance and widely acclaimed revolutionary seakeeping features of all hulls in the Rafnar range.

Like all our vessels the Rafnar Tactical range is built to handle any environment, mission and possible situation, giving operators the confidence they need to feel secure, agile, and in control. With incredible build quality adhering to the world's highest maritime standards —such as Lloyds and SOLAS— it is also self-righting and available with optional ballistic protection.

The ÖK Hull, with its exceptional seakeeping, dynamic stability and lack of slamming, provides superior visibility at all speeds —perfect when boarding vessels— minimizes wake, and has an immense load-carrying capacity. Every aspect of the boat is designed to be durable and robust. It can take heavy damage and still stay afloat, and in case of an engine failure, it can still climb over its plane threshold.



RAFNAR 850

LEISURE



RAFNAR

TECHNICAL INFORMATION

8.50 m

Length overall

3.00 m

Beam

0.55 m

Draft of hull

BASE MODEL*

Empty craft mass

3200 kg

Fuel capacity

300 L

Power

330 hp

Drive Train

Jet / Stern drive

Construction

GRP

Speed

30 knots

Design catagory

Lloyd's Register S.S.C.

*Engine setup and fuel capacity can be modified

RAFNAR 850

LEISURE

The Rafnar 850 Leisure is an 8.5 meter support RIB that is ideal for the leisure market.

Designed as a general purpose super- or mega-yacht service tender exhibiting the proven performance and widely acclaimed revolutionary seakeeping features of all hulls in the Rafnar range, the Rafnar 850 is an easily deployable and transportable craft. Adhering to the precise and patented scaling-adaptation of the ÖK Hull & Keel Technology, the Rafnar 850 is well suited to any task - providing exceptional manoeuvrability, safety and comfort, and phenomenal seakeeping in even the roughest seas.

At a compact 8.5 meters, this Rafnar support tender can be conveniently stowed on deck or in the lazarette or hold of a super- or mega-yacht and is easily craned or launched. With a customised deck layout designed to suit multi-purpose requirements, including guest comfort, the Rafnar 850 Leisure is delivered with one of two propulsion options: Jet-drive, or Stern-drive. This fast, nimble, and stable support craft exhibits all of the key acclaimed ÖK Hull & Keel Technology features and qualities of her bigger siblings.



RAFNAR 1100/1200

LEISURE



RAFNAR

TECHNICAL INFORMATION

11.15 m

Length overall

3.20 m

Beam

0.55 m

Draft of hull

BASE MODEL*

Empty craft mass

3800 kg

Fuel capacity

600 L

Power

600 hp

Drive Train

Outboard

Construction

GRP

Speed

40 knots

Design category

Lloyd's Register S.S.C.

*Engine setup and fuel capacity can be modified

RAFNAR 1100/1200

LEISURE

The Rafnar 1100 Leisure is an 11-meter luxury RIB tender and chase-boat designed for the super- and mega-yacht market. A formidable craft that has been tested and developed in close co-operation with Coast Guards, Search and Rescue teams, and Special Forces in real-world conditions in some of the roughest oceans. This vessel exhibits the proven reliability and performance and widely acclaimed revolutionary seakeeping features of all hulls in the Rafnar range.

The Rafnar 1100 is ideally suited for passenger transportation, recreation and adventure on the water, longer distance exploration voyages in often changeable and difficult conditions, and observer or chase-boat duties at regatta events. With two powerful outboard engines driving this exceptionally stable craft at speeds in excess of 40 knots, the Rafnar 1100 Leisure is a 'get there fast - in safety and comfort' vessel, even in uncomfortable and changing sea conditions, as attested by many professional operators the world over.

The Rafnar 1100 Leisure is built to Lloyd's Register Certification, assuring owners and operators of the craft's rugged and proven safety, seaworthiness, and build quality, and adheres to the precise and patented scaling adaptation of the ÖK Hull & Keel Technology. Rafnar relies upon the application of the very latest in composite production technology and materials in all Rafnar production facilities.

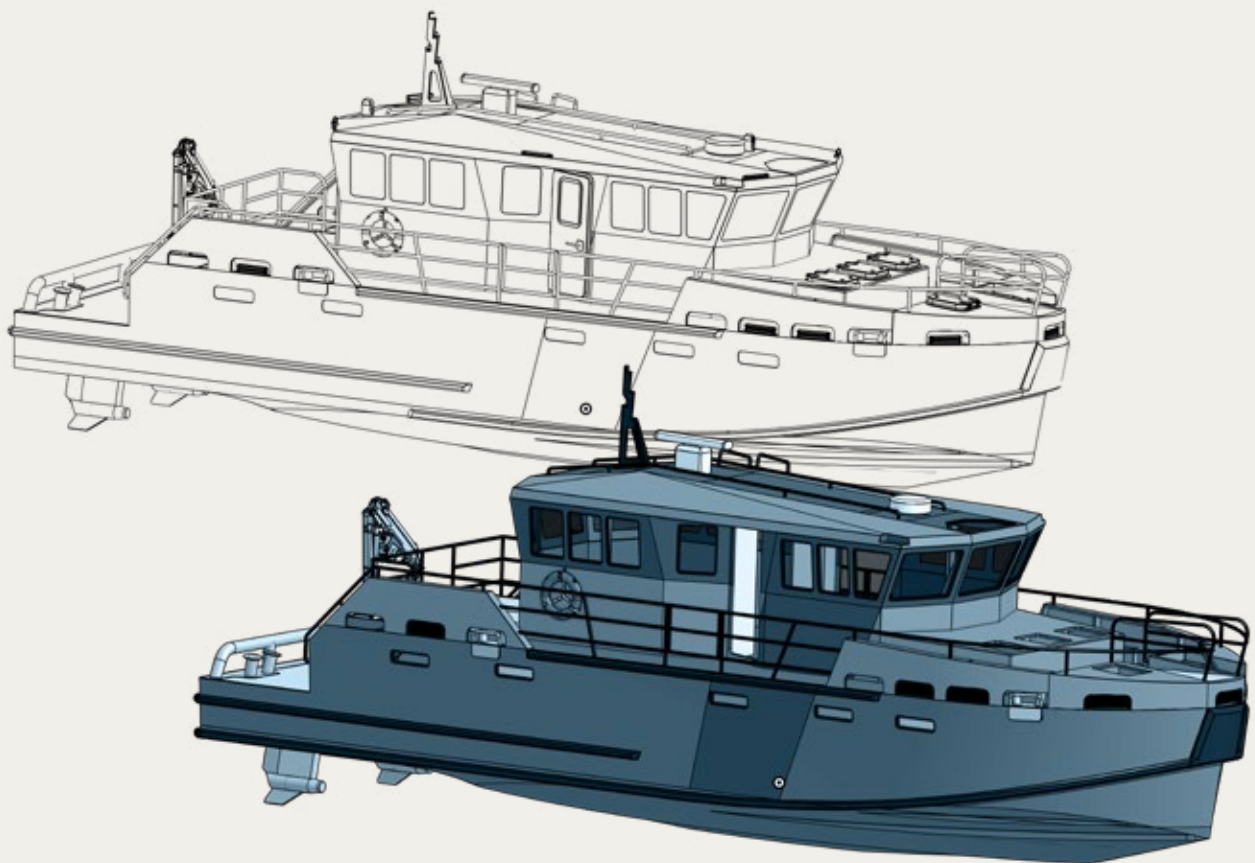


SPECIAL BUILDS

Our design team is always standing by, to help outt your boat with everything you need to fuel your next adventure.

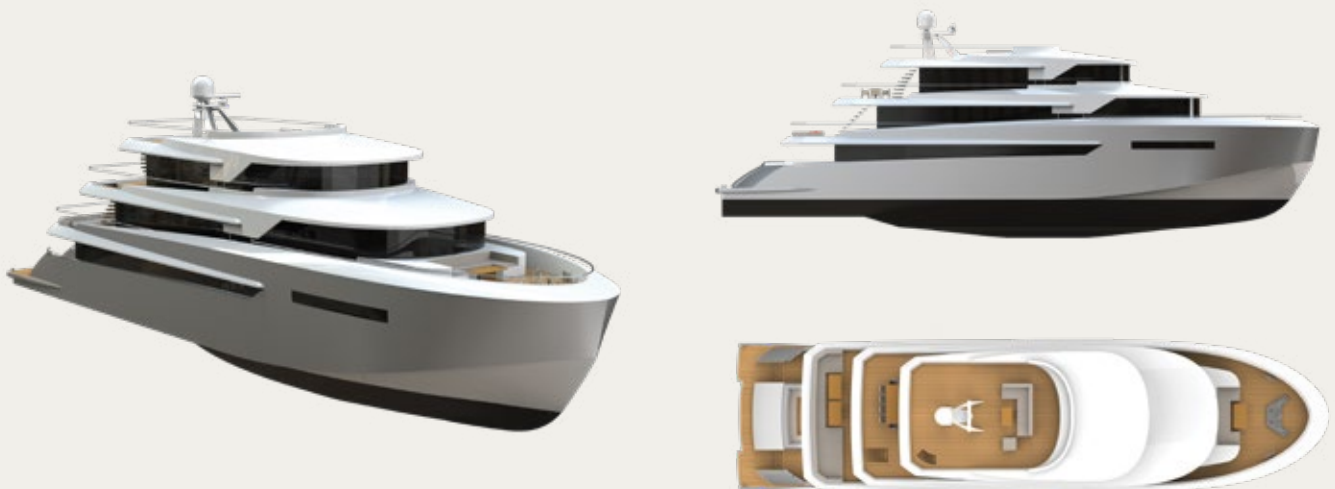
Rafnar offers potential clients the option of special builds. Whether it be different lengths or changes to the superstructure, The ÖK Hull can be adapted for a variety of purposes. Rafnar has already developed vessels for various tasks that can be quickly made into reality. Rafnar consistently works with well-known designers and naval architects to get the feel and usability needed from our owners.

The cabin versions of the Rafnar are ideally suited for passenger transportation, recreation, and adventure on the water like longer distance exploration voyages in often changeable and difcult conditions. The spacious and luxurious cabins which can be offered due to the weight-carrying capabilities of the ÖK Hull, can be tted with multiple features and various layouts already exist to choose from.





This Rafnar 1500 is a yacht designed for use in colder climates. With large windows and a comfortable interior, its passengers can enjoy arctic conditions from its cabin comforts.



One of our concept designs, this Rafnar 3800, was designed and tested to show the capabilities of the ÖK Hull on larger vessels. Our innovative hull utilizes its abilities fully on larger ships and boats.



RAF NAR



<https://www.youtube.com/c/rafnarmaritime>



<https://www.linkedin.com/company/rafnarmaritime>



<https://www.facebook.com/rafnarmaritime>



https://www.instagram.com/rafnar_maritime

For a quote, kindly contact us directly via
www.rafnar.com/get-quote